

Your color story

VOXFLO^R
www.voxflor.com

Shanghai Headquarter
T +86 021 62989325

Milano Creative Studio
T +39 3885863150

China Branch Office
Beijing/ Guangzhou/ Shenzhen/ Xiamen
T 400 021 0790



SENSE COLLECTION



VOXFLO^R

SENSE系列

还在为没有一款合适的中性色而头疼吗？

VOXFLO® SENSE Collection 将会是设计师和建筑师的最爱。无论是单独使用，或者组合在一起，Sense系列都使地面呈现出一种低调的、细腻的、丰富的、可靠的、故事性的、思辨的氛围。蓬松的高圈与紧致的低圈让Sense所勾勒出的地面更加具有感染力。

SENSE COLLECTION

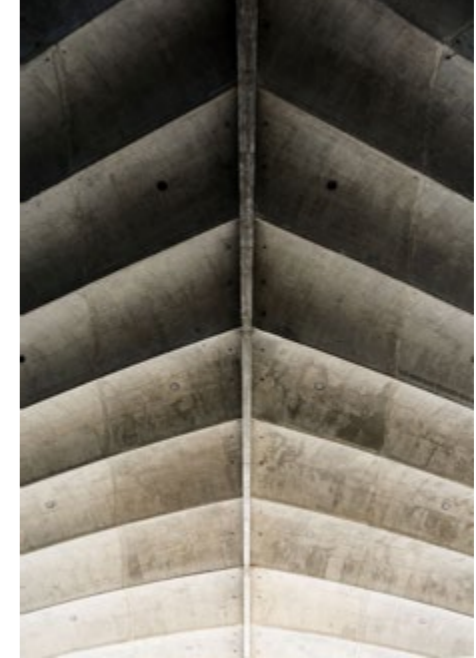
Still having a headache for not having a suitable neutral color?

VOXFLO® SENSE COLLECTION will be a favorite of designers and architects. Whether used alone or in combinations, SENSE COLLECTION creates a low-key, subtle, rich, reliable, story-telling and mindful atmosphere on the floor. The puffy high yarn loops and tight low yarn loops make the floor more appealing.

12 of 36 colors are chosen to make the roomsetting pictures in this brochure. Obviously, SENSE COLLECTION could do more than this. It's designed to inspire architects and interior designers.

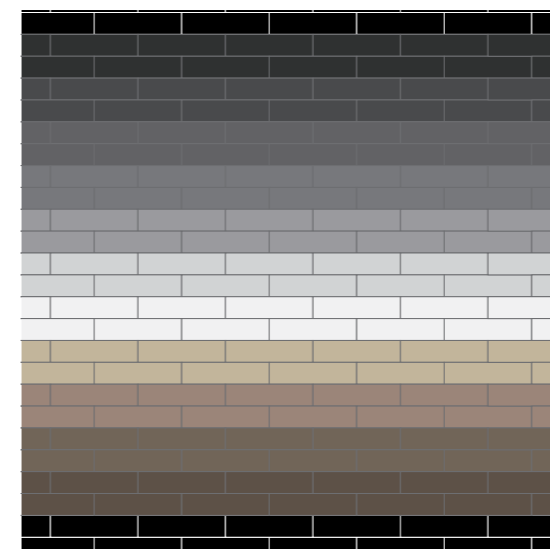
本手册中从SENSE COLLECTION的36种颜色中选择了12种作为铺贴效果展示。显然，SENSE COLLECTION可以做的还不止这些。它旨在激发建筑师和室内设计师的灵感。



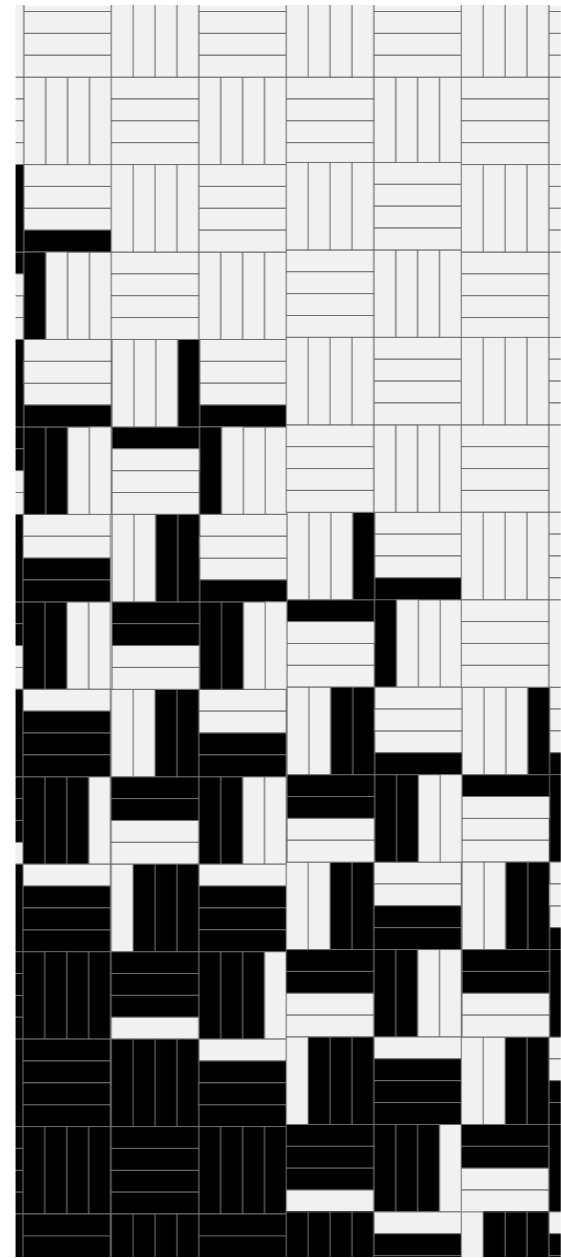


S M O O T H
立 体 感

从明到暗的丰富渐变，使地面产生立体感。



- A3 Sense 75016 Tricon Black
- A4 Sense 75013 Caviar
- B2 Sense 75027 Inkwell
- C1 Sense 75010 Outerspace
- J2 Sense 75025 Granite Peak
- C4 Sense 75011 Downing Slate
- B5 Sense 75002 African Gray
- B6 Sense 75001 Icicle
- K6 Sense 75029 Rodeo
- L6 Sense 75033 Mindful Gray
- L2 Sense 75031 Gray Matters
- A6 Sense 75034 Iron Ore

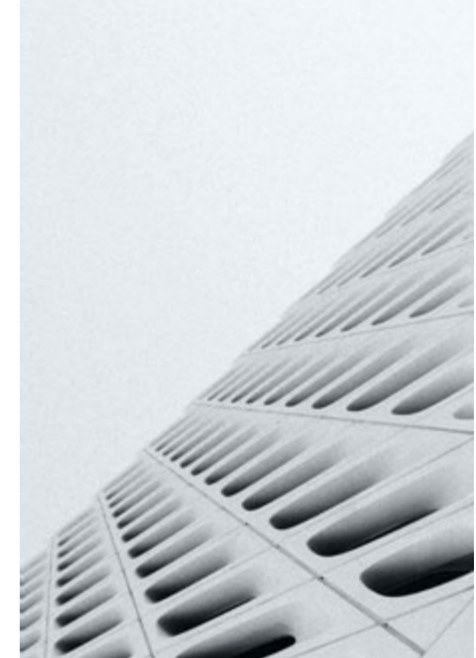


F L A T
平 面 化

最亮与最暗的组合，形成极简的平面化的风格。

■ A3 Sense 75016 Tricon Black

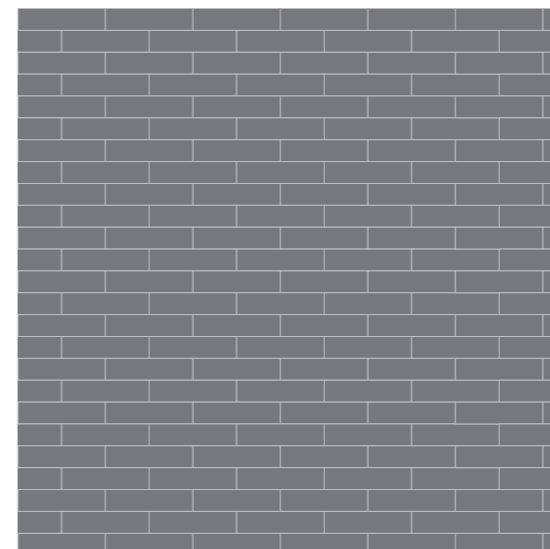
□ B6 Sense 75001 Icicle



S E P E R A T E

独 立

独立的元素形成完整的效果，百看不厌。



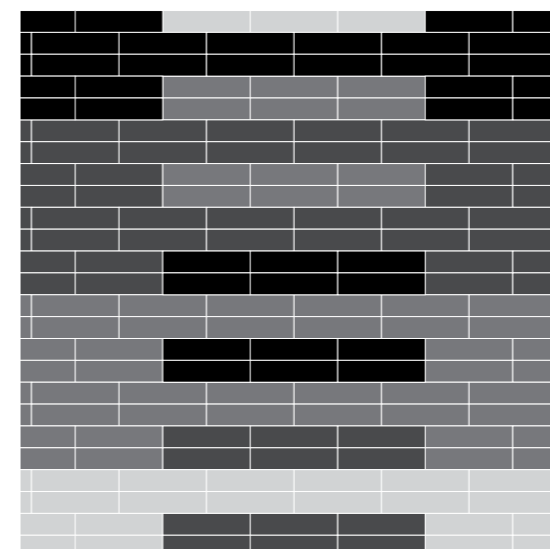
■ J2 Sense 75025 Granite Peak



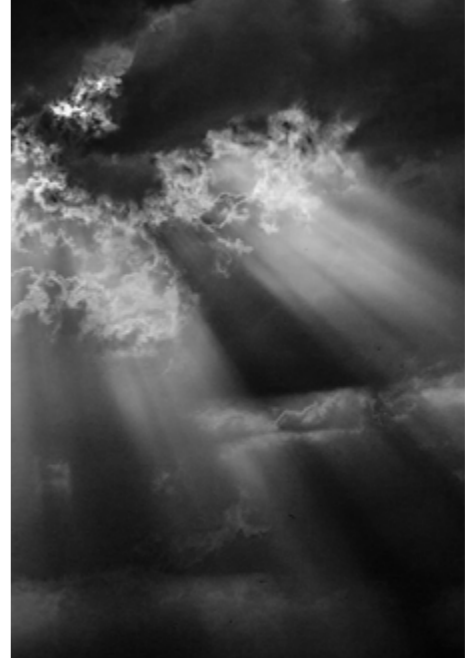
R E L A T E D

息 息 相 关

不同明度互相穿插组合，形成有趣味的排列。

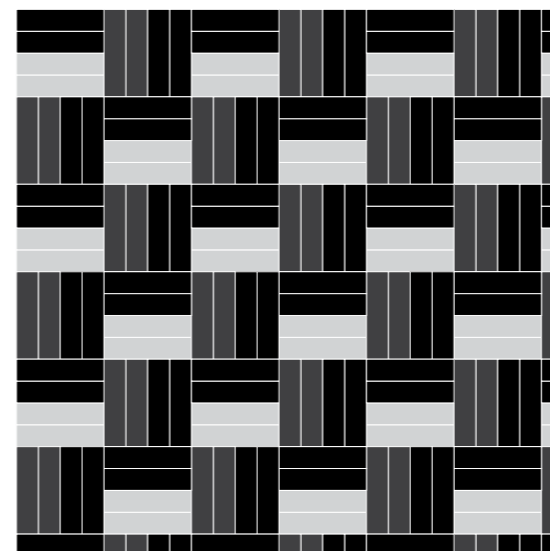


- A3 Sense 75016 Tricon Black
- A4 Sense 75013 Caviar
- C1 Sense 75010 Outerspace
- C4 Sense 75011 Downing Slate



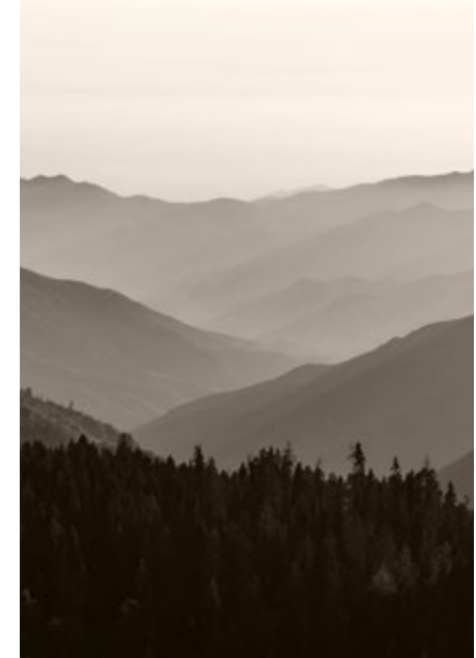
D R A M A T I C
戏 剧 化

突然闪现的高光，使黑暗的画面出现产生张力。



- **A3** **Sense 75016** Tricon Black
- **A4** **Sense 75013** Caviar

- **B5** **Sense 75002** African Gray



S U B T L E
低 调 细 腻

循规蹈矩的排列，、带来含蓄内敛的效果。



- A3 Sense 75016 Tricon Black
- A4 Sense 75013 Caviar

- L2 Sense 75031 Gray Matters
- A6 Sense 75034 Iron Ore



V I B R A N T

满 有 活 力

鲜明的对比并带有起伏棱角的铺装，使得地面充满了能量。



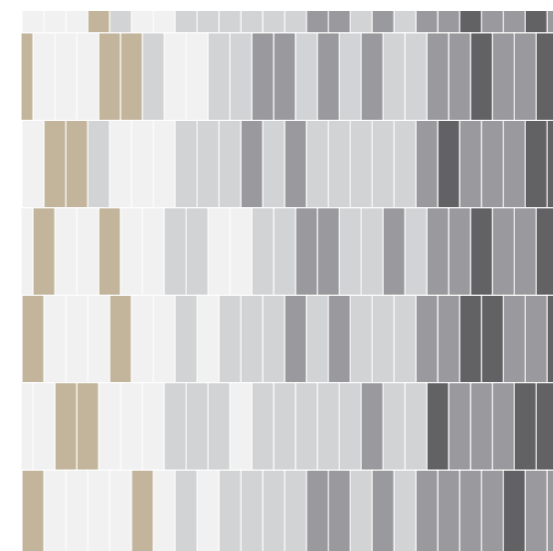
- A3 Sense 75016 Tricon Black
- C1 Sense 75010 Outerspace
- J2 Sense 75025 Granite Peak
- B5 Sense 75002 African Gray
- L6 Sense 75033 Mindful Gray



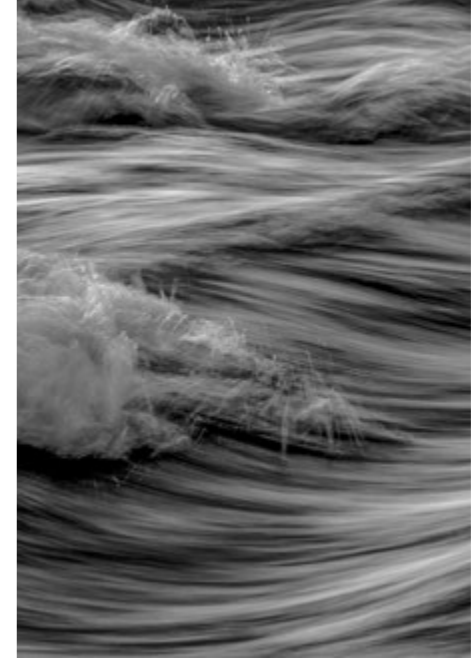
M E L L O W

温 柔 醇 香

微微错开的排布配合细腻的变化，举手投足之间是温婉与优雅。

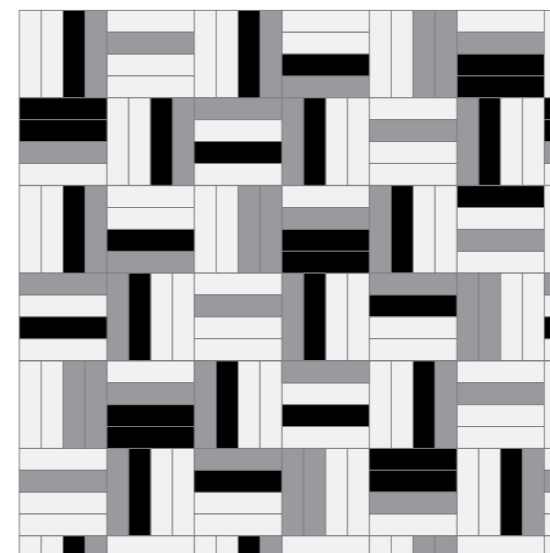


- C1 Sense 75010 Outerspace
- C4 Sense 75011 Downing Slate
- B5 Sense 75002 African Gray
- B6 Sense 75001 Icicle
- K6 Sense 75029 Rodeo



B R I S K
轻 快 活 跃

明快中带有跳跃，亦实亦虚。



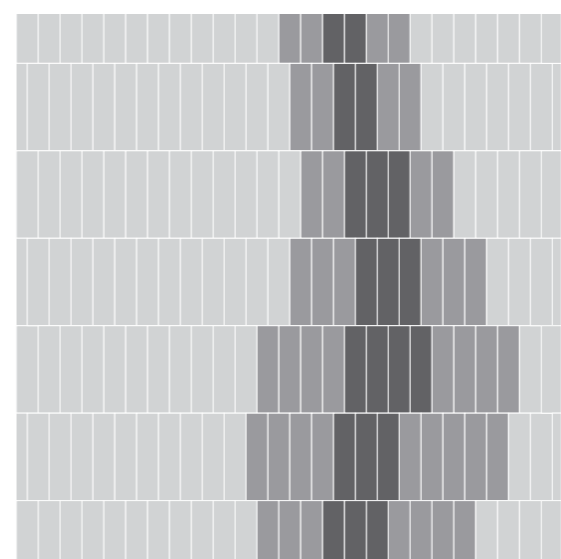
- **A3** **Sense 75016** Tricon Black

- **C4** **Sense 75011** Downing Slate
- **B5** **Sense 75002** African Gray

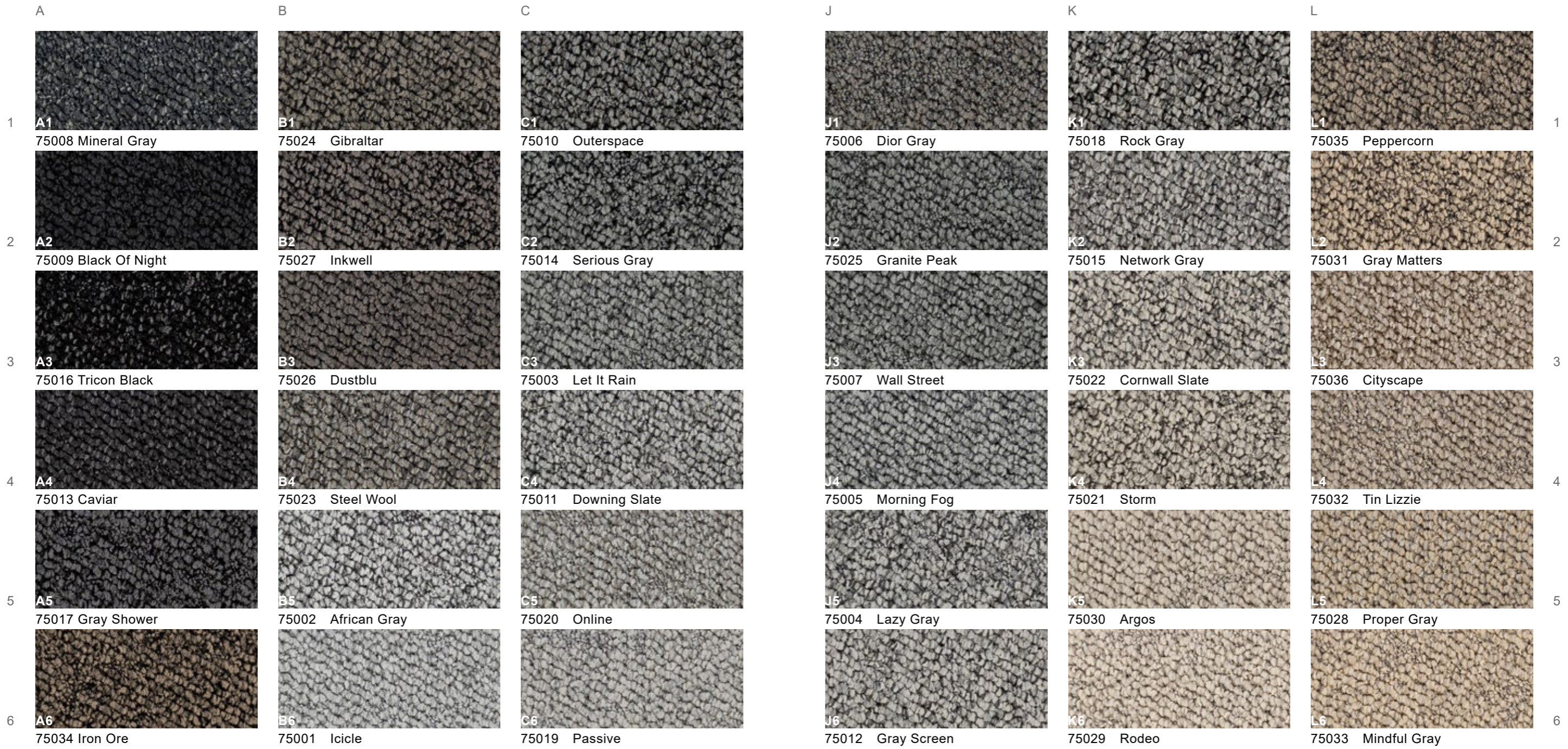


C A L M
平 静 安 稳

浅色的渐变，营造一种静谧的感受。



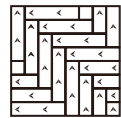
- C1 Sense 75010 Outerspace
- J2 Sense 75025 Granite Peak
- C4 Sense 75011 Downing Slate
- B5 Sense 75002 African Gray



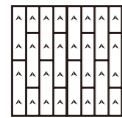
75001 Icicle.....B6	75007 Wall Street.....J3	75013 Caviar.....A4	75019 Passive.....C6	75025 Granite Peak.....J2	75031 Gray Matters.....L2
75002 African Gray.....B5	75008 Mineral Gray.....A1	75014 Serious Gray.....C2	75020 Online.....C5	75026 Dustblu.....B3	75032 TinLizzie.....L4
75003 Let It Rain.....C3	75009 Black Of Night.....A2	75015 Network Gray.....K2	75021 Storm.....K4	75027 Inkwell.....B2	75033 Mindful Gray.....L6
75004 Lazy Gray.....J5	75010 Outerspace.....C1	75016 Tricon Black.....A3	75022 Cornwall Slate.....K3	75028 Proper Gray.....L5	75034 Iron Ore.....A6
75005 Morning Fog.....J4	75011 Downing Slate.....C4	75017 Gray Shower.....A5	75023 Steel Wool.....B4	75029 Rodeo.....K6	75035 Peppercorn.....L1
75006 Dior Gray.....J1	75012 Gray Screen.....J6	75018 Rock Gray.....K1	75024 Gibraltar.....B1	75030 Argos.....K5	75036 Cityscape.....L3

Specifications

Style Name:	Sense
Construction:	Multi-level Loop
Fiber:	Voxflor Certified Nylon
Gauge:	1/12"
Stitches:	9 per inch
Average Pile Height:	4.0mm±0.5mm
Pile Weight:	24 oz/yd ²
Backing:	EcoAir-Bac™
Tile size:	25cm*100cm
Area of Use:	Commercial - Heavy Duty
Antimicrobial:	Ultra-Fresh Treatment (Available)
Flammability:	ASTM E 648 Class I, GB8624-2012 B1(C)
Smoke Density:	ASTM E 662 Less than 450, GB/T 8627-1999
Static Propensity:	AATCC-134 ≤3.5kV, GB/T 18044-2008



Herringbone



Ashlar

