

WATERFALL

COLLECTION

A warm gray base carries **7 clean vibrant accent colors**. **2 meters long** and provides a **smooth transition between gray and full color**. A simple linear **multi-level textured loop** that offers a waterfall of **colors and formats**.



VOXFLO^R
www.voxflor.com

Shanghai **Headquarters**
T +86 021 62989325

Milano Creative Studio
T +39 3885863150

China **Branch Offices**
Beijing/ Guangzhou/ Shenzhen/ Xiamen



VOXFLO^R
passion and purpose

01.

OUR GOAL

One of the VOXFLOOR classics. Its full extension is **2 meters long** and provides **a smooth transition between gray and full color.** You can use the set of tiles either as a complete set or by selecting fewer tiles for a more unique floor pattern.

VOXFLOOR
MILANO CREATIVE STUDIO



Waterfall 04

02.

COLORS

A simple linear **multi-level textured loop** that offers a waterfall of **colors and formats**.

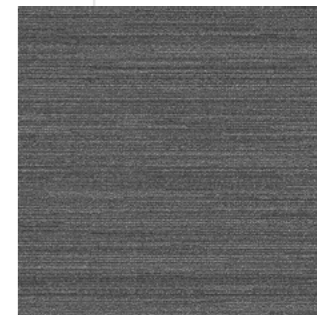
Waterfall has become one of Vox flor's most popular designer products due to its vibrant color, linear pattern, and multiple format availability. Providing a flexible foundation to build an exciting floor design. From simple color insets and edge treatments to more complex graduated zoning Waterfall is a major asset in your floor design toolbox.

NATURAL FADING





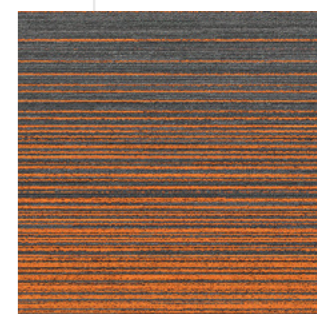
Waterfall 01, 05



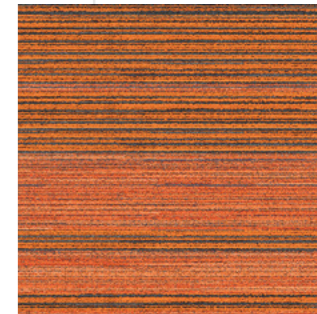
Waterfall 05



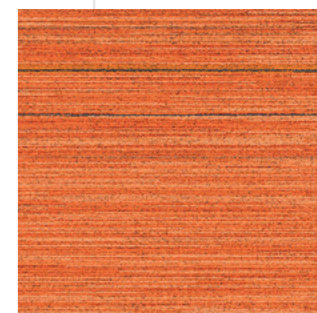
Waterfall 01-A



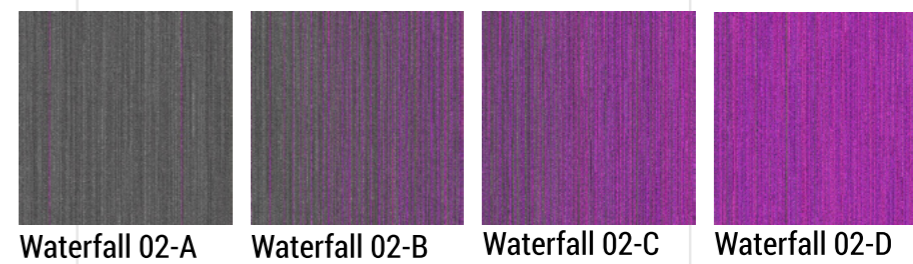
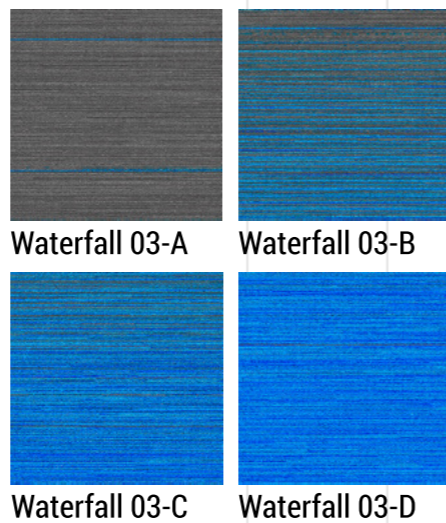
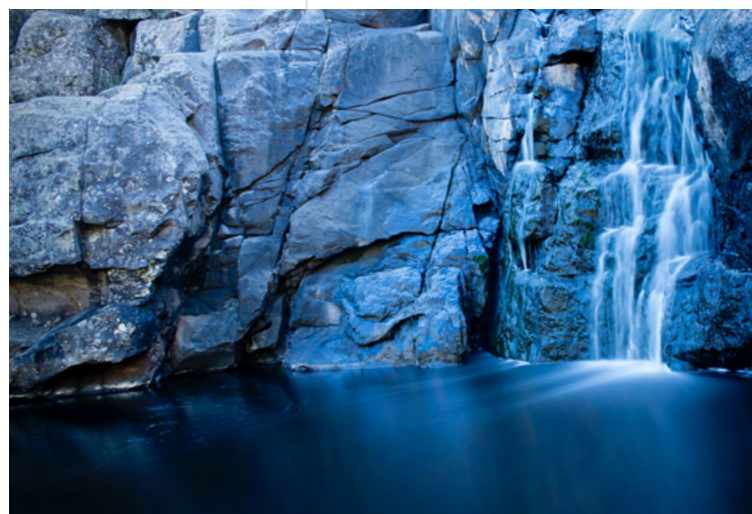
Waterfall 01-B

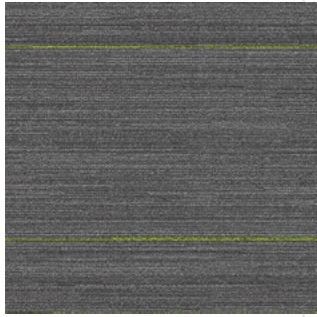


Waterfall 01-C

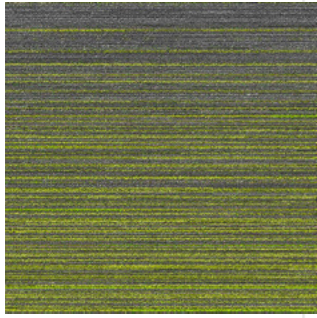


Waterfall 01-D

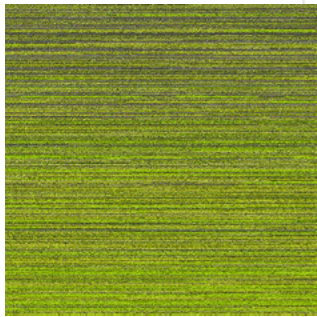




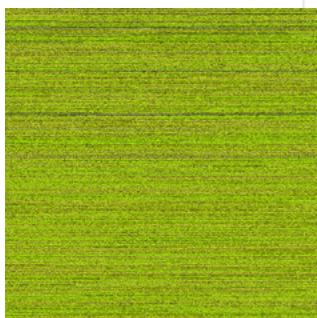
Waterfall 04-A



Waterfall 04-B



Waterfall 04-C



Waterfall 04-D



A warm gray base carries the 7 clean vibrant accent colors. Each color range has been designed to graduate over 2m which offers the facility to create one long graduating color or arrange of individual color tones.



Waterfall 04



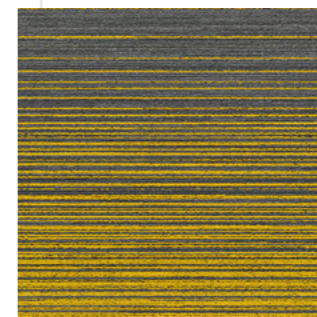
Waterfall 05, 07



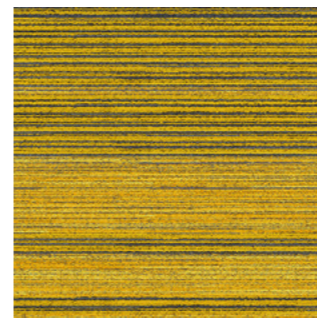
Waterfall 07, 09



Waterfall 07-A



Waterfall 07-B



Waterfall 07-C

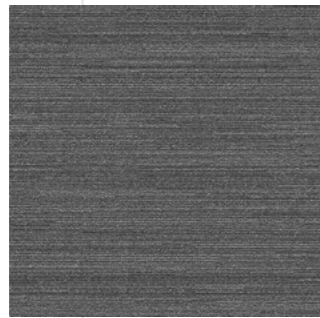


Waterfall 07-D





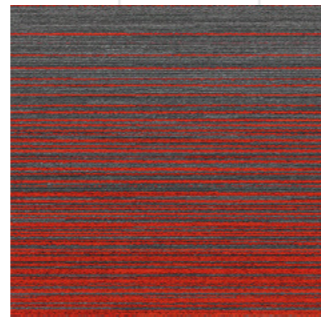
Waterfall 08



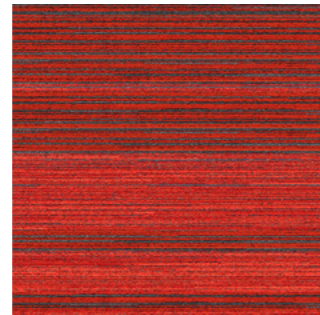
Waterfall 05



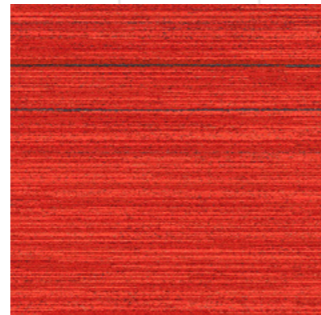
Waterfall 08-A



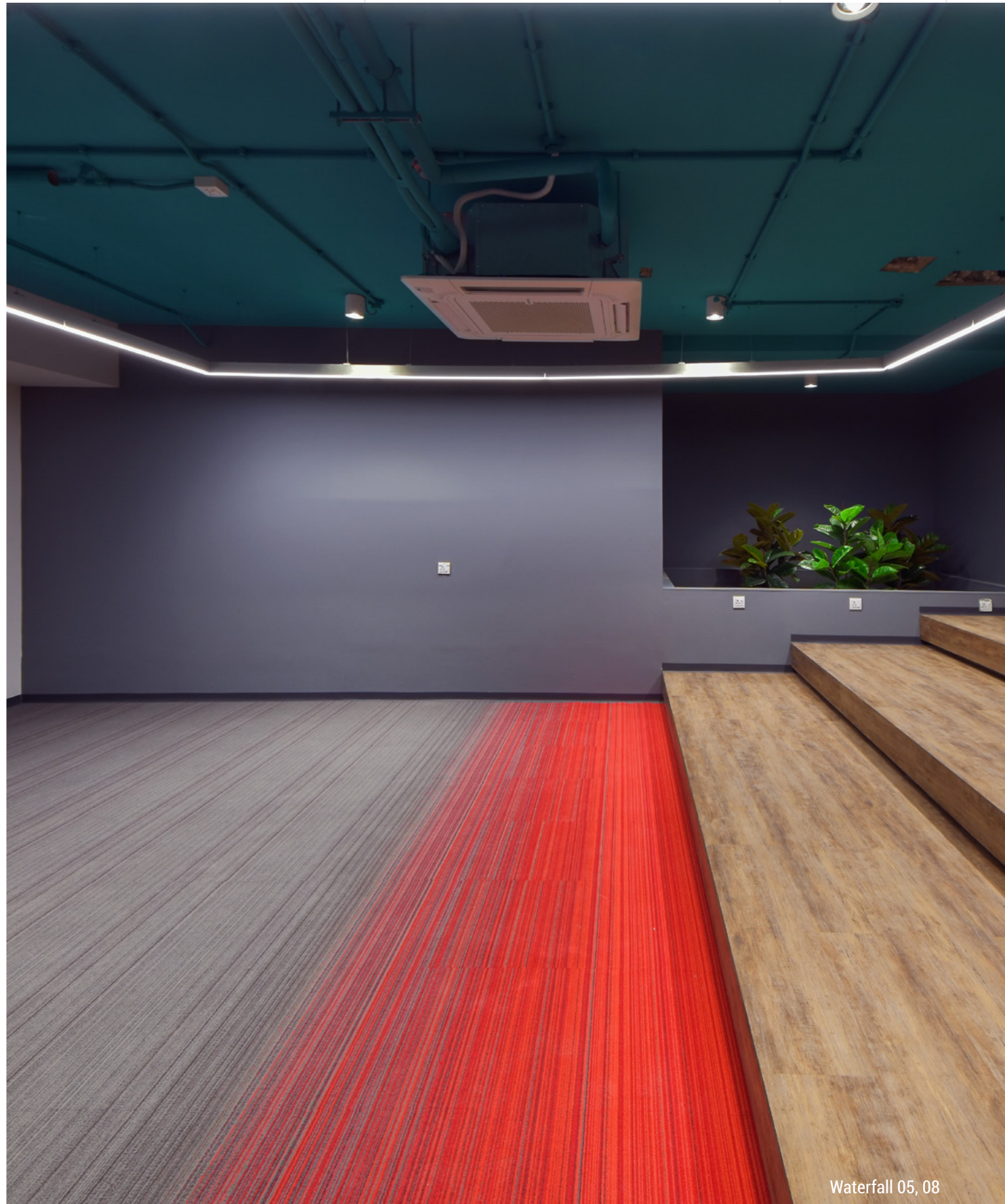
Waterfall 08-B



Waterfall 08-C



Waterfall 08-D



Waterfall 05, 08



Waterfall 09-A



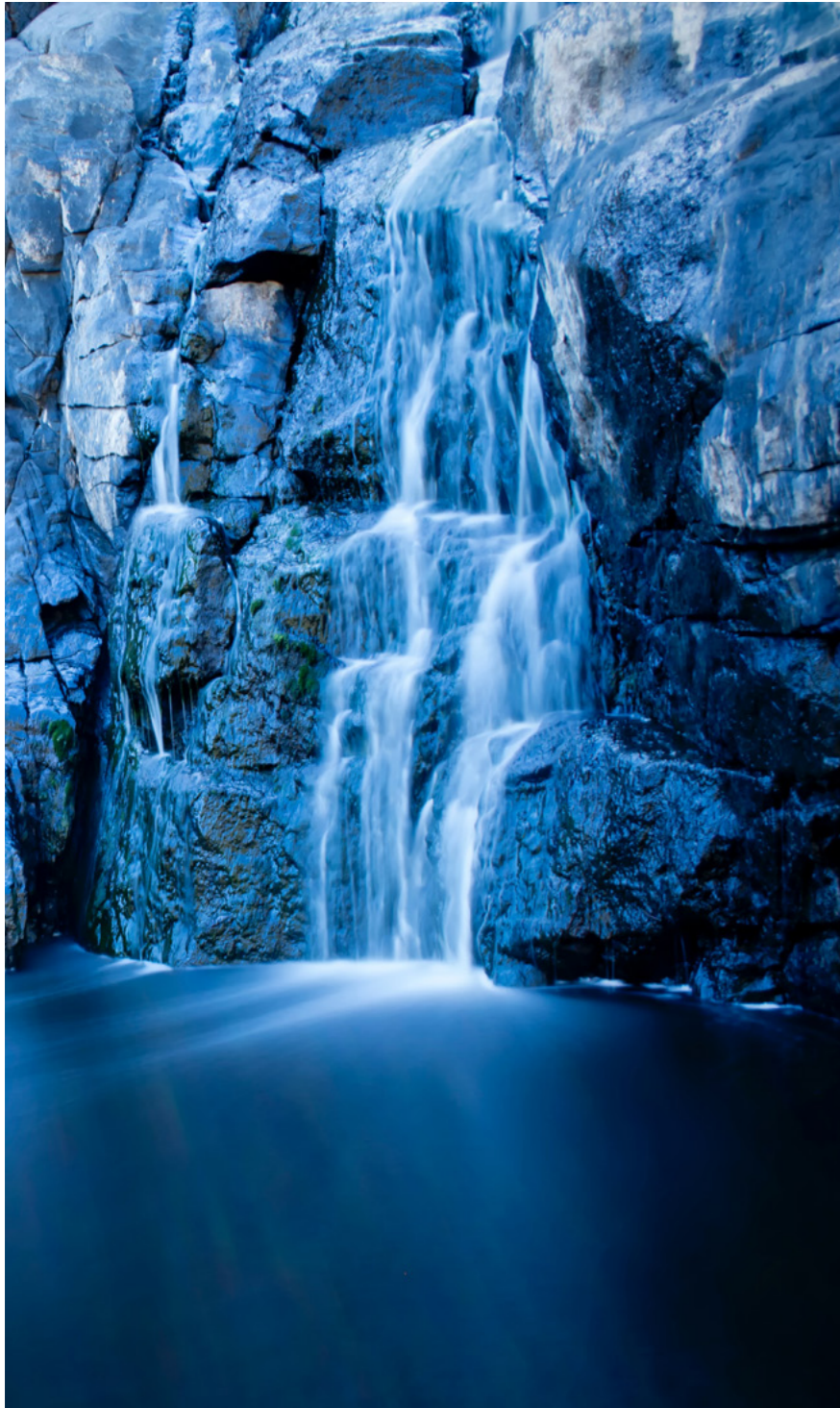
Waterfall 09-B



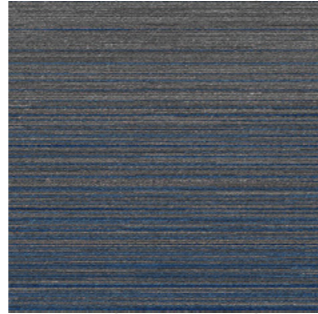
Waterfall 09-C



Waterfall 09-D



Waterfall 12-A



Waterfall 12-B



Waterfall 12-C



Waterfall 12-D



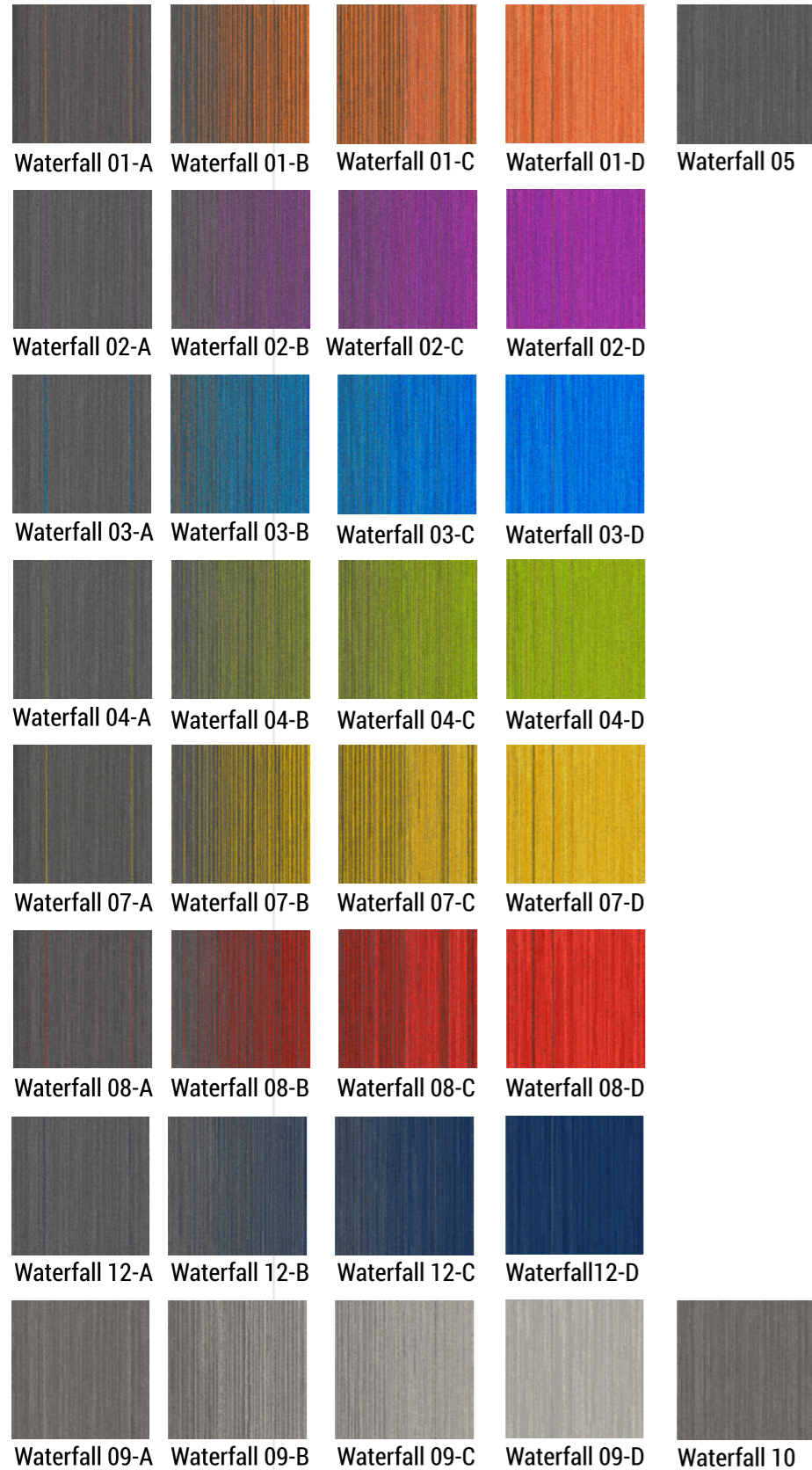
Waterfall 12



Waterfall 12, Waterfall custom

The texture of the liner can be designed differently according to different shapes, just like a puzzle, no matter how you arrange them, you will always be surprised by how creative it is.

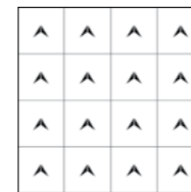
COLORS



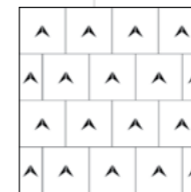
Specifications

Style Name: Waterfall
 Construction: Multi-level Loop
 Fiber: Voxflor Certified Nylon
 Gauge: 1/12"
 Stitches: 11 per inch
 Average Pile Height: 3.5 ± 0.5mm
 Backing: EcoAce-Bac®
 Tile size: 50cm*50cm
 Area of Use: Commercial - Heavy Duty
 Anti-microbial: Ultra-Fresh Treatment (Available)
 Flammability: ASTM E648 Class I, GB8624-2012 B1(C)
 Smoke Density: ASTM E662 Less than 450, GB/T 8627-1999
 Static Propensity: AATCC-134≤3.5 KV, GB/T 18044-2008

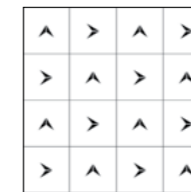
Installation Methods



Monolithic

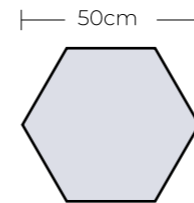


Brick

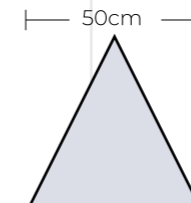


Quarter-turn

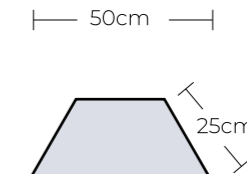
Shape System



Hexagon



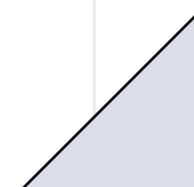
Triangle



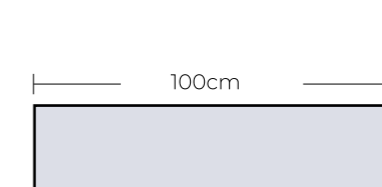
Trapezoid



Square



Rightangle



Plank

Manufacture System

SOLAR
made carpet

VOXFLOOR builds its own solar power generation system and use clean energy to produce in a sustainable way.



An Environmental Product Declaration (EPD) tells the life cycle story of a product in a single, comprehensive report. The EPD provides information about a product's impact upon the environment, such as global warming potential, smog creation, ozone depletion and water pollution.



Administered by the Singapore Environment Council (SEC) since 1999, It is Singapore's leading environmental standard and certification mark with over 3800 unique products certified across 43 countries.

Credits Contribution to:



LEED (Leadership in Energy and Environmental Design) is the most widely used green building rating system in the world. LEED certification is a globally recognized symbol of sustainability achievement and leadership.



Our manufacture system has been certified under ISO 9001, ISO 14001 and ISO 45001, which means with the management, production facility and the strict quality controls, VOXFLOOR® represents qualified and trusty products.



EcoAce-Bac®
GLP No. : 100231

Green Label Plus is an independent testing program that identifies carpet, adhesives, and cushion with very low emissions of VOCs to help improve indoor air quality.



VOXFLOOR recommends using its own carpet tile tackifier with rust inhibitor. It is an EC-1 PLUS certified adhesive.



Ultra-Fresh is a portfolio of antimicrobial treatments developed by Thomson Research Associates, Inc. Customer can choose this High-Performance Antimicrobial Technology.



WELL is the leading tool for advancing health and well-being in buildings globally. Register your office, building or other space to leverage WELL's flexible framework for improving health and human experience through design.



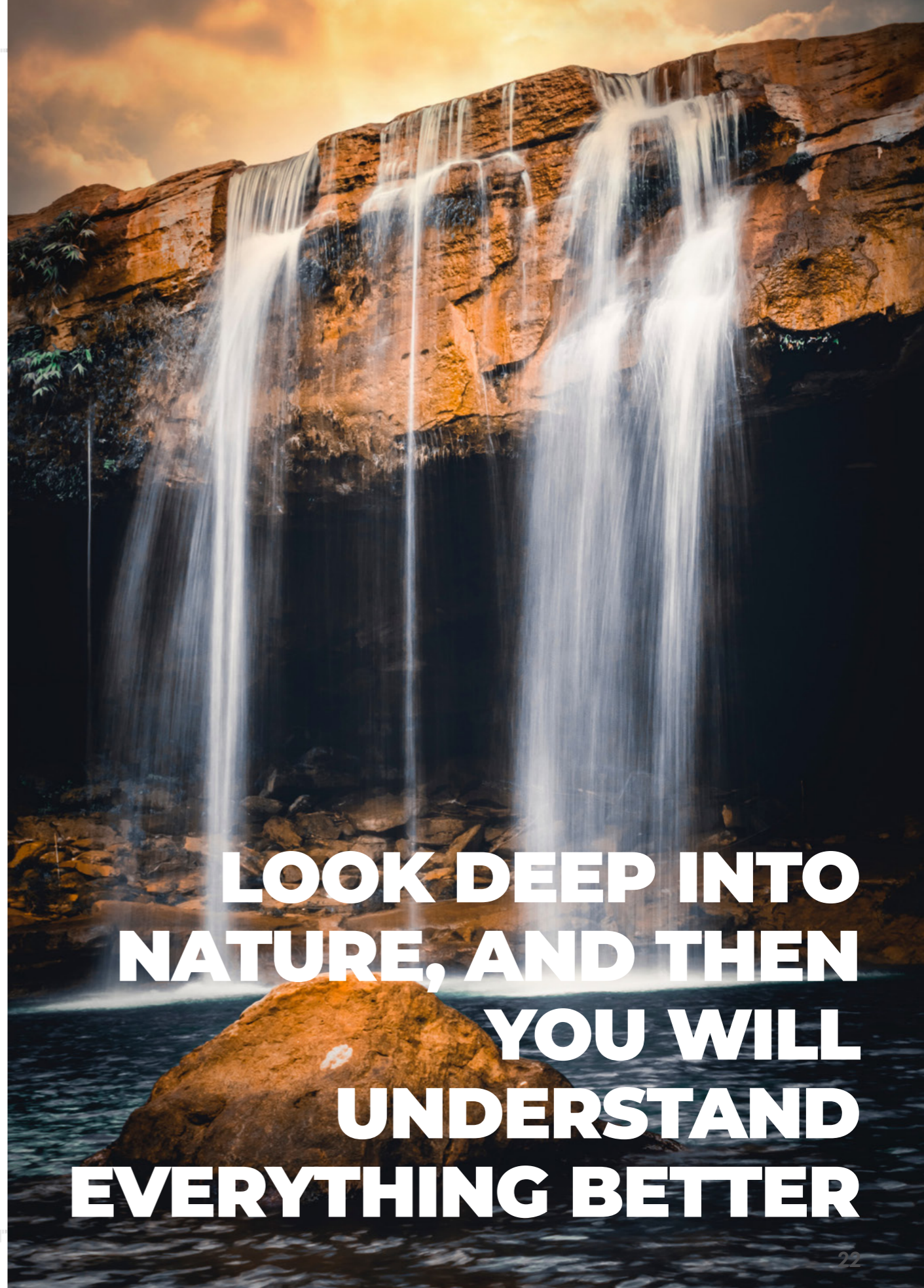
Declare is a transparency platform to share and find healthy building products. VOXFLOOR's EcoAce-Bac® Collection reach "Red List Free" grade.



CE marking indicates that a product has been assessed by the manufacturer and deemed to meet EU safety, health and environmental protection requirements.



Cradle to Cradle Certified® is the global standard for products that are safe, circular and responsibly made. It is to ensure the impact of their products on people and planet is a positive one.



**LOOK DEEP INTO
NATURE, AND THEN
YOU WILL
UNDERSTAND
EVERYTHING BETTER**